



Delaware River Basin Commission



Managing Water Resources Without Regard To Political Boundaries

- Water Resource Planning and Development
- Regulatory Authority for Water Quantity and Quality
- Work with State and Federal Partners
- Forum for Adaptive Management

Delaware River Watershed Facts

- ❑ Over 15 million people (about 5% of the U.S. population) rely on the waters of the basin
- ❑ Drains 13,539 mi², or 0.4 of 1% of the continental U.S. land area
- ❑ Daily water withdrawal in the DRB = 8.7 BGD





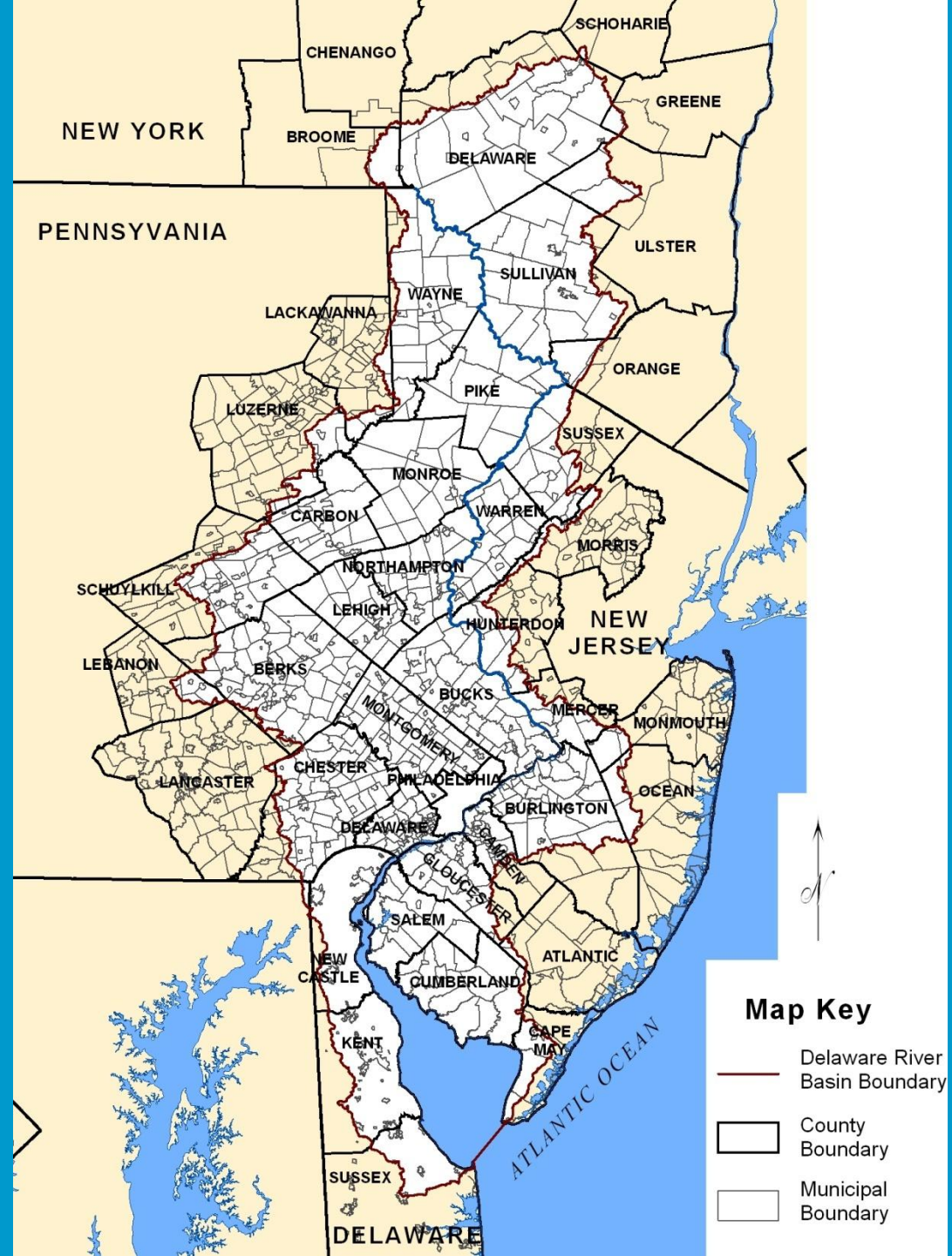
Delaware River Port Complex – Largest Fresh Water Port

- **\$25 B – Annual Economic Activity**
- **\$21 B – Ecosystem Goods & Services**
- **600,000 Jobs - \$10 B Annual Wages**

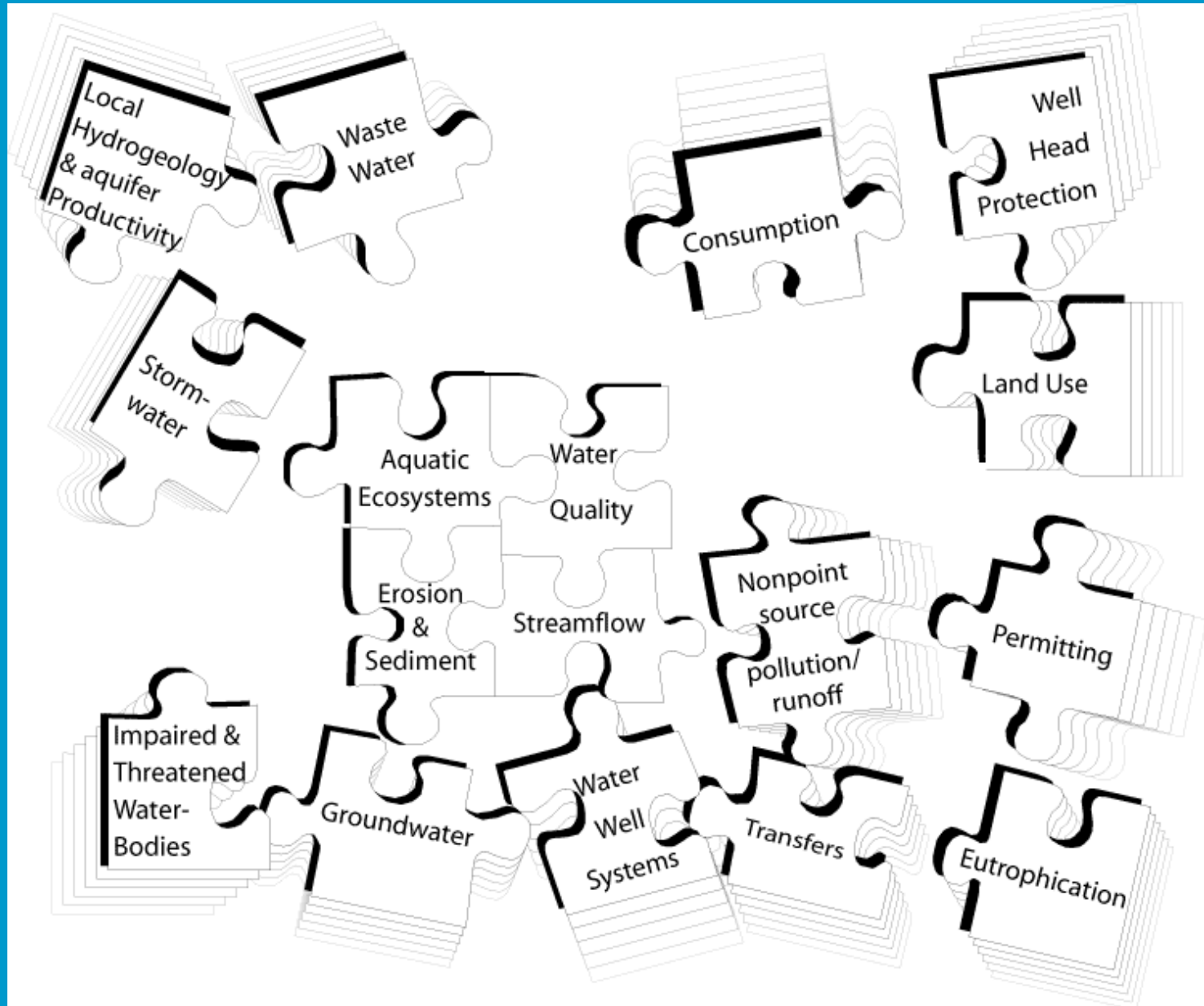
Jerry Kauffman, Univ. Delaware, 2011

The Need for Basin-Scale Planning

- 4 States
- 25 Congressional Districts
- 42 Counties
- 838 Municipalities



Interconnected Water Resources

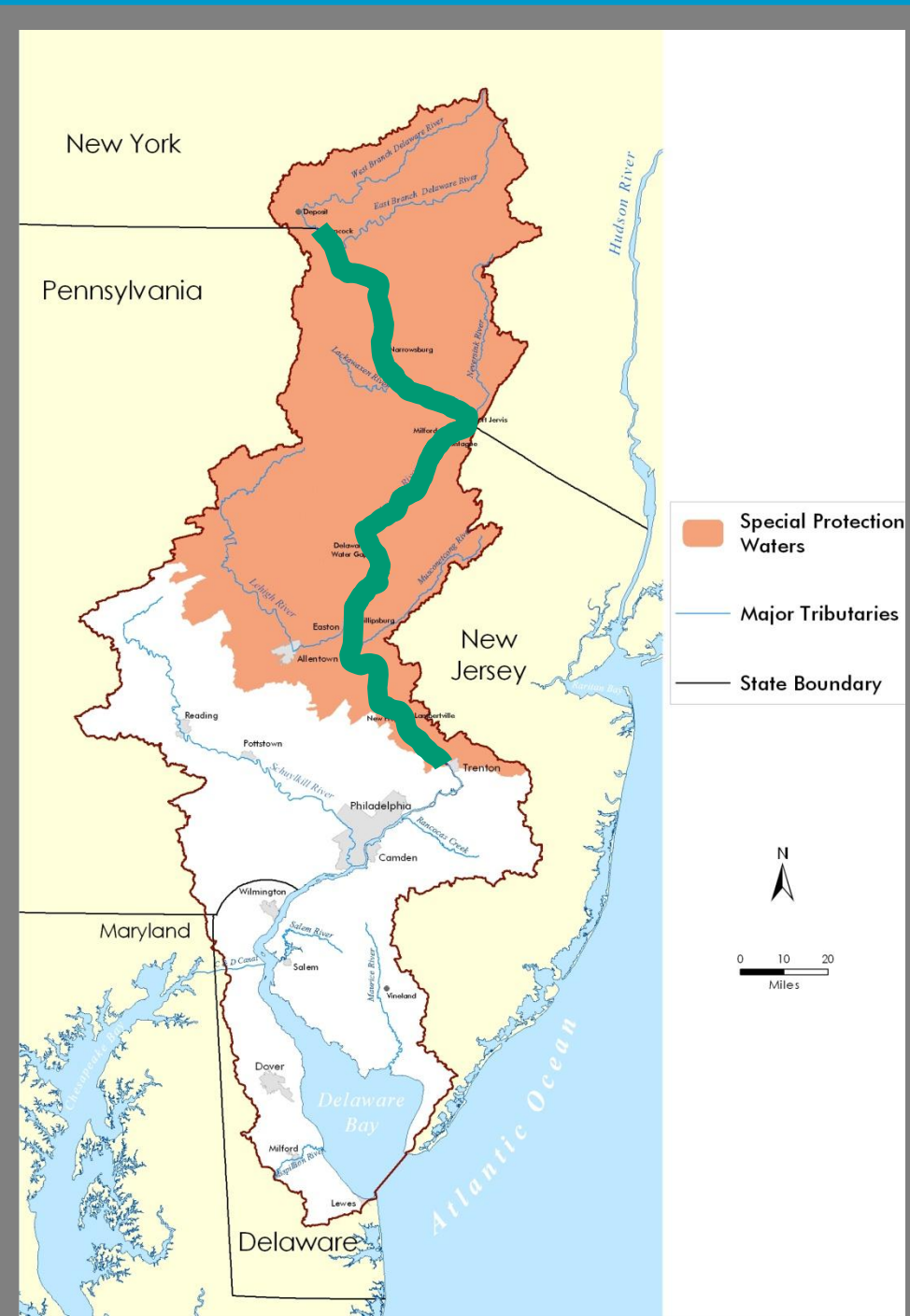


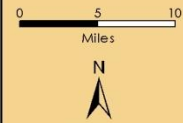
We Have Made A Difference



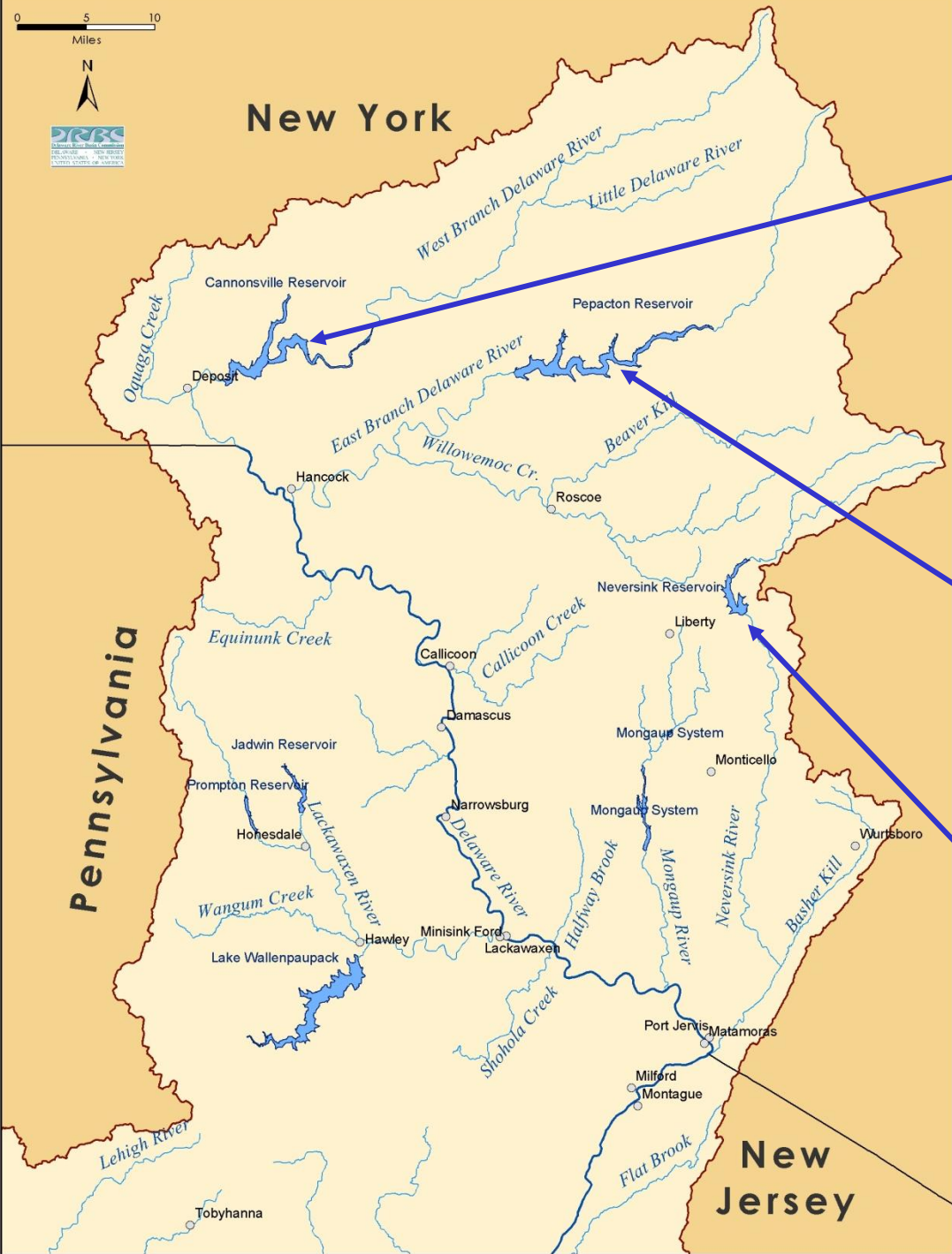
Keep the Clean Water Clean

- ❑ Total non-tidal river and its watershed designated DRBC Special Protection Waters
- ❑ Mainstem = longest stretch of anti-degradation waters in U.S.
- ❑ No measurable change in water quality





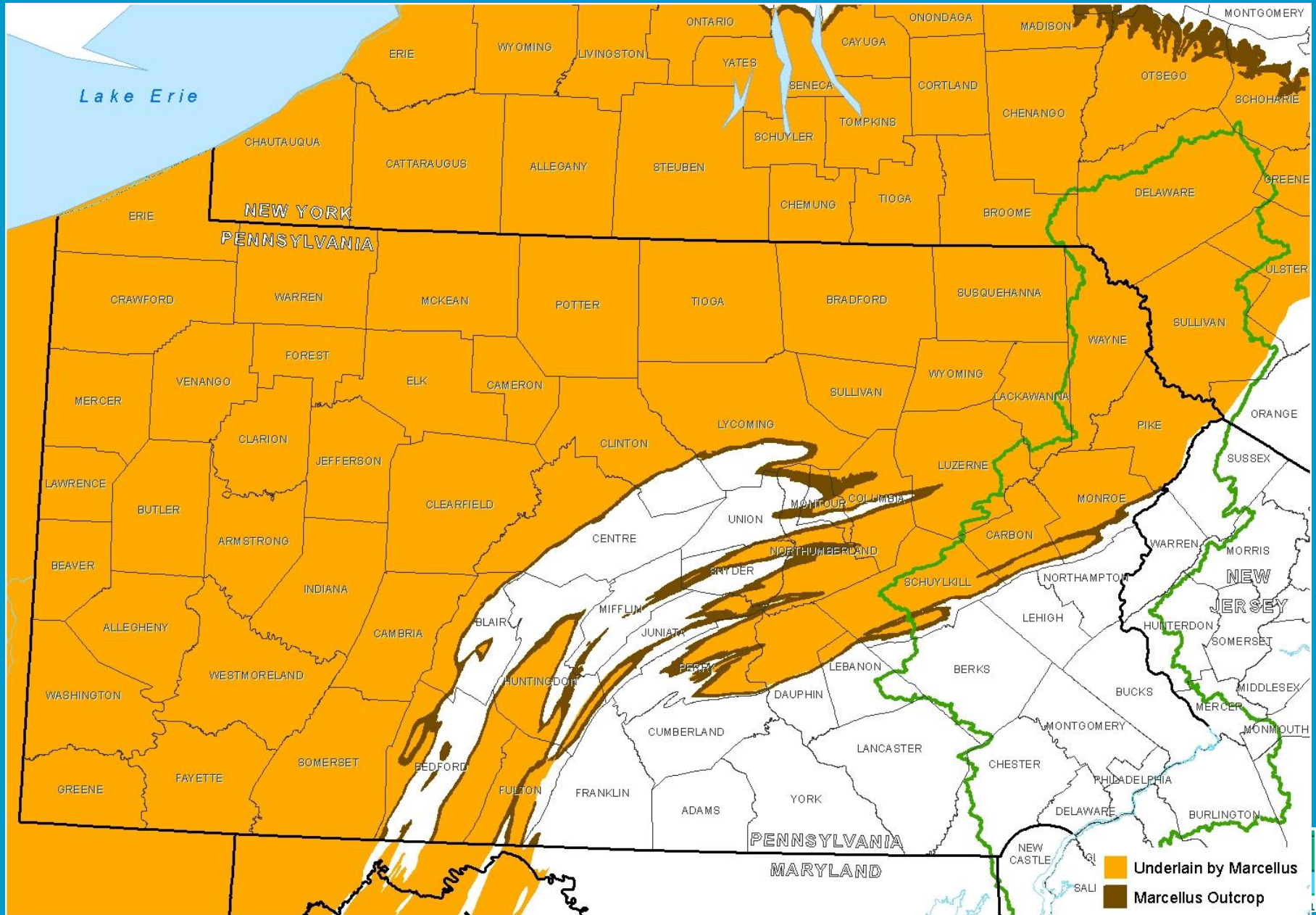
New York



Delaware River

•Photos Courtesy NY DEP

Marcellus Shale, Delaware Basin Boundary



DRBC Value Added

- Provides voice for all members on issues affecting the shared waters
- Requiring level of protection necessary for the specific needs of the watershed
- Brings people together to manage the resource

So Why Is IWRM So Difficult?

- Physical –
 - Watershed vs Political Boundaries
 - Groundwater – Surface Water
 - Variability/Complexity –
 - Mother Nature Bats Last!
- Socio-Economic/ Governmental
 - Urban – Rural; Upstream – Downstream Users
 - Governmental Layers
 - Differing laws, grant programs, conflicts

Not Easy and Always Complex, So How Do We Promote IWRM?

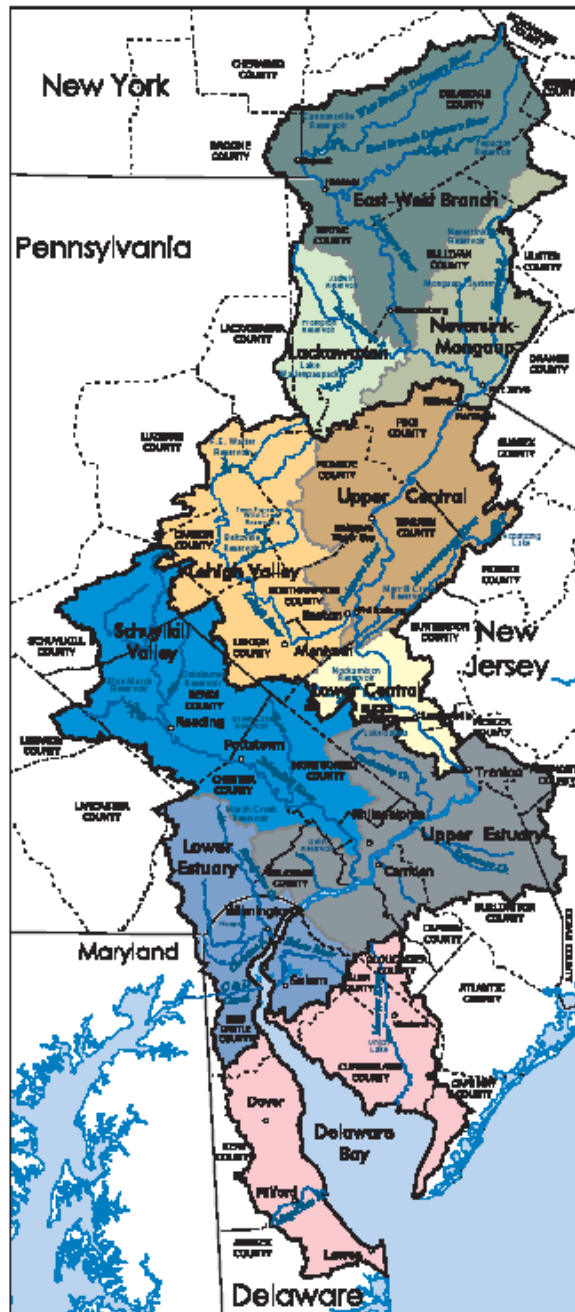
- Admit that no one agency can manage water resources
- Need many partners – technical, governmental, private sector, challengers
- Education and involvement – advisory committees, open meetings, web site
- Cost effective use of funds
- Watershed based – Very Important!

Not Easy and Always Complex, So How Do We Promote IWRM?

- Tools to show people how the system works, forces causing change, and what solutions exist (shared vision planning, etc.)
- Monitoring to show cause and effect (and transparent access to the data)
- Processes to build trust and engage multiple sectors.

Watersheds of the Delaware River Basin

- UPPER REGION**
- East-West Branch Watersheds
 - Lackawanna Watersheds
 - Nearbank-Mongaup Watersheds
- CENTRAL REGION**
- Upper Central Watersheds
 - Lower Central Watersheds
 - Lehigh Valley
- LOWER REGION**
- Schuylkill Valley
 - Upper Estuary Watersheds
 - Lower Estuary Watersheds
- BAY REGION**
- Delaware Bay Watersheds



INTERCONNECTEDNESS!

IWRM
Is
Messy
But
Worth
It!

